



ALL VENTS PROUDLY MADE IN THE USA

PLEASE READ ALL INSTRUCTIONS PRIOR TO INSTALLATION OF VENT



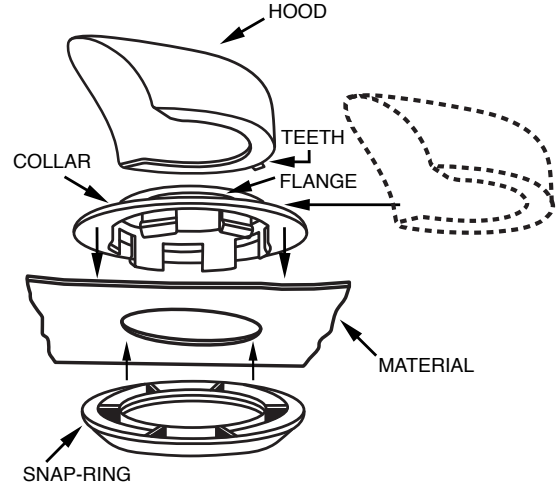
(BSA-2) SNAP-IN VENT

For Canvas, Tarps and heavy gauge materials.

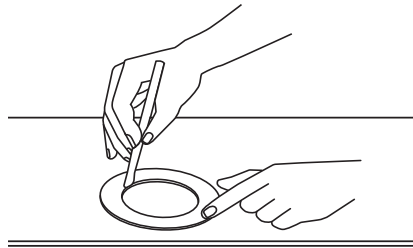
1. Select an area on covering for vent installation.

~~ SPECIAL NOTE ~~

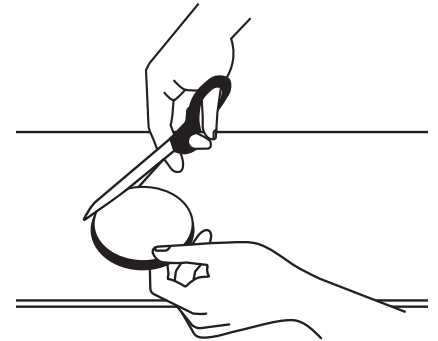
For best results, locate vent at the highest angular section of the covering.
AVOID SEAMS.



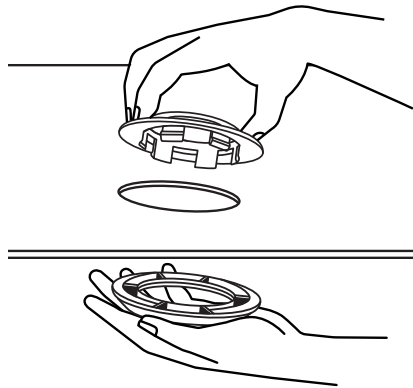
2. Scribe/Trace the inner circle of the SNAP-RING onto selected area.



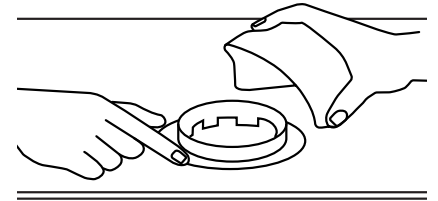
3. Remove SNAP-RING and cut scribed circle through material



4. Insert "Pronged" section of Collar through hole in material. While holding Collar inserted through hole PUSH the Snap-Ring from underside onto the flexible pronged section of Collar until locked in place. ALL prongs (6) should be locked into Snap-Ring for proper securement.



5. To attach HOOD – push/slip Hood under flange section of the Collar. Push forward while holding front section of the unit until two teeth on back edge of HOOD lock over ridge located on Collar.



For trailer type covers, point the Hood opening opposite to the direction of towing vehicle during travel for best venting effect.
TO REMOVE HOOD, press down on front section of HOOD to lift two teeth on back edge over sharp ridge – slide HOOD off.